

ENGINEUITY 2022



Installation Guide

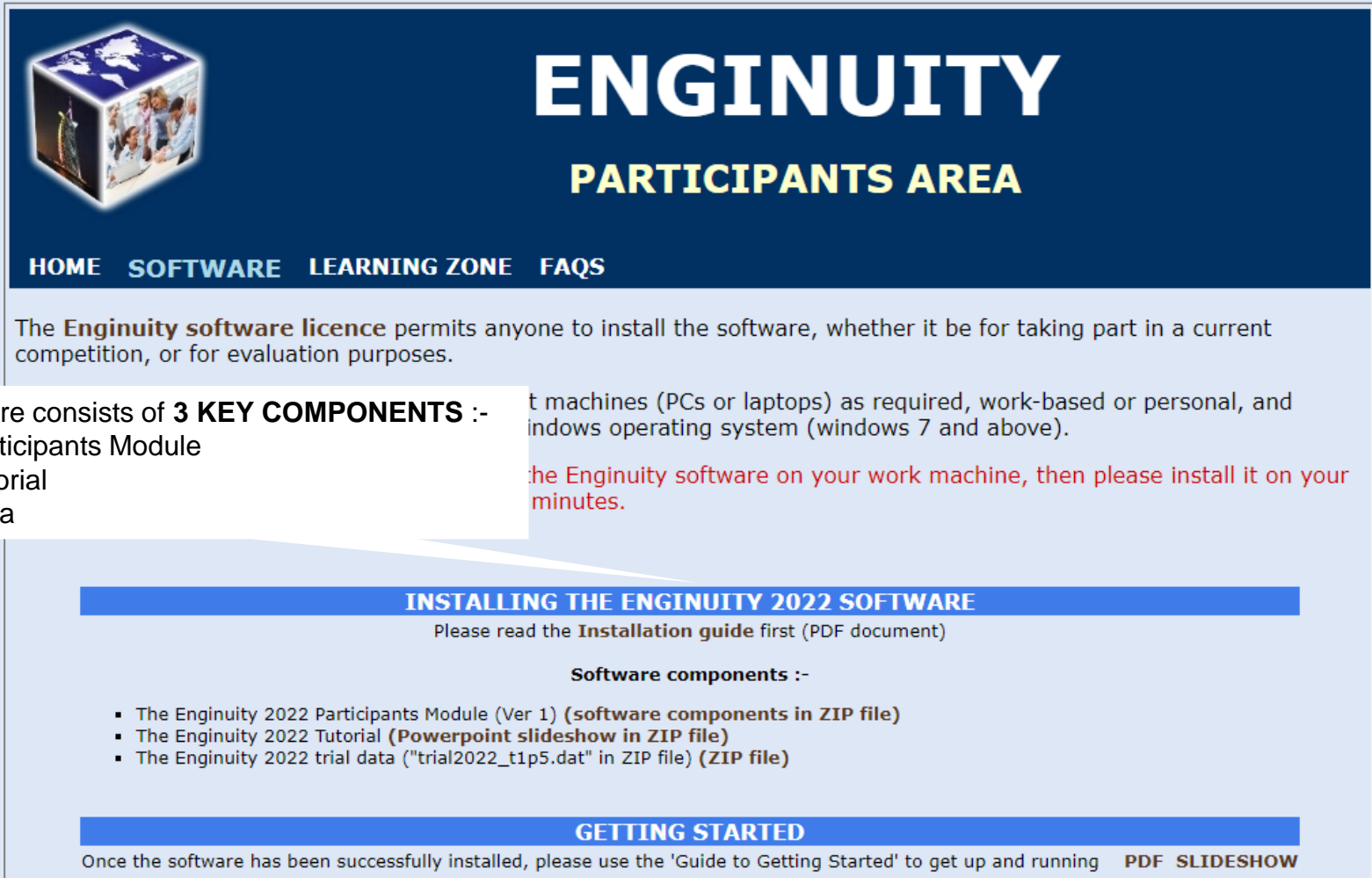


The following document guides you through the process of installing the **ENGINUITY 2022** software.

The software can be installed on as many client machines as is required.

The software is available from the **"Participants Area"** of the website.

YOU WILL NEED ADMINISTRATIVE RIGHTS ON YOUR MACHINE TO INSTALL THE SOFTWARE.



The screenshot shows the Enginuity Participants Area website. At the top left is a cube logo with a globe and people. The main header reads "ENGINUITY PARTICIPANTS AREA" in large white and yellow letters. Below the header is a navigation menu with "HOME", "SOFTWARE", "LEARNING ZONE", and "FAQS". The main content area contains text about software licenses and installation instructions. A blue banner at the bottom of the screenshot reads "INSTALLING THE ENGINUITY 2022 SOFTWARE" and "GETTING STARTED".

To software consists of **3 KEY COMPONENTS** :-

- The Participants Module
- The Tutorial
- Trial data

...t machines (PCs or laptops) as required, work-based or personal, and windows operating system (windows 7 and above).

...the Enginuity software on your work machine, then please install it on your minutes.

INSTALLING THE ENGINUITY 2022 SOFTWARE

Please read the **Installation guide** first (PDF document)

Software components :-

- The Enginuity 2022 Participants Module (Ver 1) (software components in ZIP file)
- The Enginuity 2022 Tutorial (Powerpoint slideshow in ZIP file)
- The Enginuity 2022 trial data ("trial2022_t1p5.dat" in ZIP file) (ZIP file)

GETTING STARTED

Once the software has been successfully installed, please use the 'Guide to Getting Started' to get up and running **PDF SLIDESHOW**

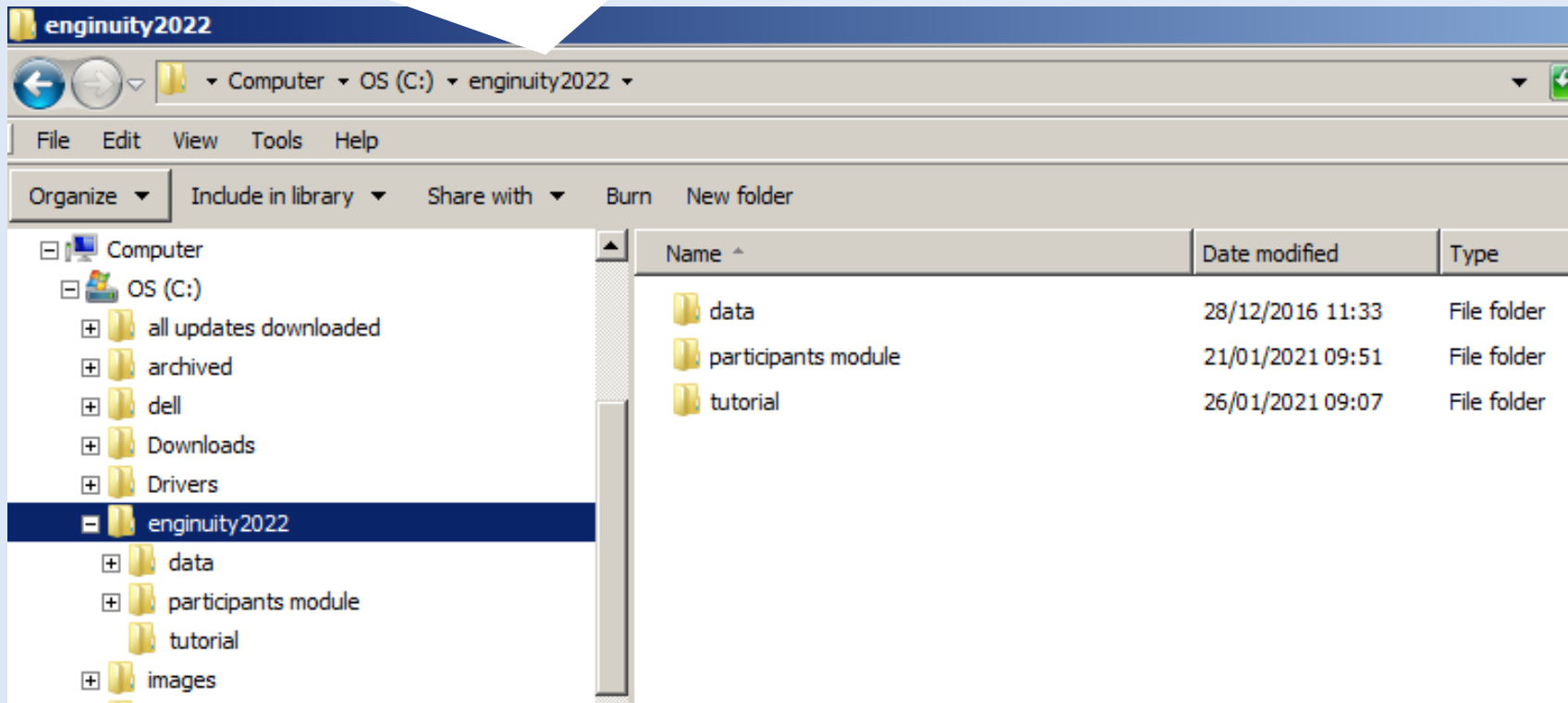


Before downloading and installing the software it is suggested that a **folder structure is created** to hold the various software components, as shown below.

A new folder should be created off the root drive (normally the c: drive) called “**enginuity2022**”.

Below the ”**enginuity2022**” folder 3 appropriately named sub folders are created to hold the software components :-

- participants module
- tutorial
- data





The **Enginuity 2022 Participants Module** is the software interface that enables you to take part in an Enginuity Competition.

INSTALLING THE PARTICIPANTS MODULE

1. Click on the "ZIP file" link and download "enginuity2022_participants_module.zip" to the "enginuity2022\participants module" folder
2. Unzip the 3 installation files in "enginuity2022_participants_module.zip" :-
"setup.exe"
"setup.lst"
"enginuitypm.cab"
3. Run "setup.exe" to install the Participants Module on your machine

RUNNING THE PARTICIPANTS MODULE

Either :-

- Use the Start Menu and navigate to "Enginuity 2022 Participants Module", or
- Run "enginuitypm.exe" from the "Program Files\Enginuity2022 Participants Module" folder

PROBLEMS

If you encounter any problems either installing or running the Participants Module :-

- Look for a solution in the "**FAQs/Operational**" section of the "**Participants Area**" of the website, or
- Contact the Competition Controller for further guidance

INSTALLING THE ENGINUITY 2022 SOFTWARE

Please read the **Installation guide** first (PDF document)

Software components :-

- The Enginuity 2022 Participants Module (Ver 1) (software components in ZIP file)
- The Enginuity 2022 Tutorial (Powerpoint slideshow in ZIP file)
- The Enginuity 2022 trial data ("trial2022_t1p5.dat" in ZIP file) (ZIP file)

GETTING STARTED

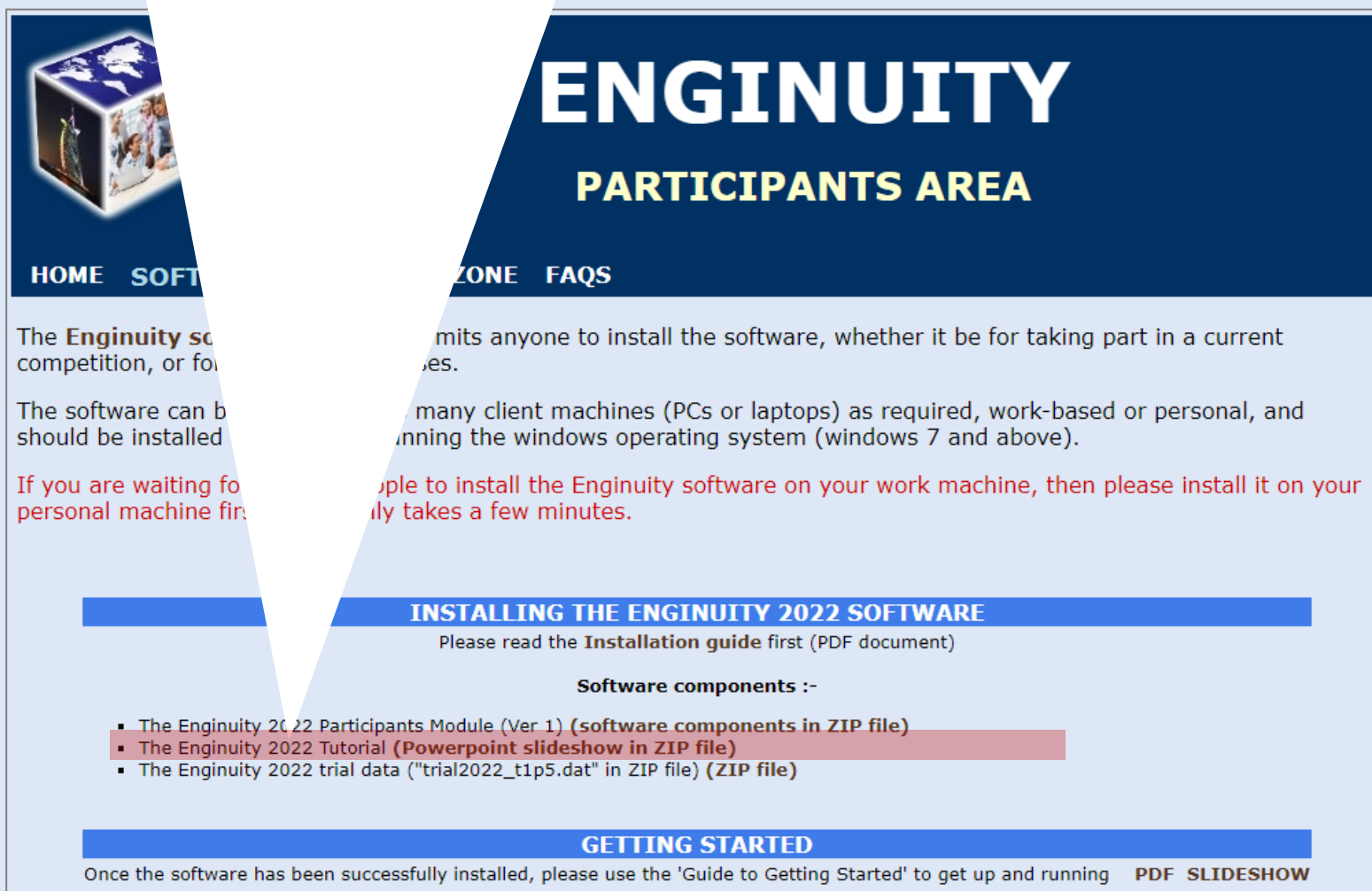
Once the software has been successfully installed, please use the 'Guide to Getting Started' to get up and running **PDF SLIDESHOW**



The **Engenuity 2022 Tutorial** is a comprehensive powerpoint slideshow covering all aspects of the simulation, and the first point of reference for help.

INSTALLING THE TUTORIAL

1. Click on the “ZIP file” link and download “engenuity2022_tutorial.zip” to the "engenuity2022\tutorial” folder
2. Unzip the “engenuity2022_tutorial.ppsx” slideshow from the zip file



The screenshot shows the Engenuity Participants Area website. At the top, there is a navigation menu with links for HOME, SOFTWARE, SUPPORT, FORUMS, ZONE, and FAQs. The main heading reads "ENGINUITY PARTICIPANTS AREA". Below this, there is a section titled "INSTALLING THE ENGINUITY 2022 SOFTWARE" which includes instructions to read the installation guide and a list of software components. A "GETTING STARTED" section is also visible at the bottom.

ENGINUITY PARTICIPANTS AREA

HOME SOFTWARE SUPPORT FORUMS ZONE FAQs

The **Engenuity software** is available to all participants and permits anyone to install the software, whether it be for taking part in a current competition, or for future use.

The software can be installed on many client machines (PCs or laptops) as required, work-based or personal, and should be installed on a Windows operating system (windows 7 and above).

If you are waiting for a computer to be able to install the Engenuity software on your work machine, then please install it on your personal machine first. This only takes a few minutes.

INSTALLING THE ENGINUITY 2022 SOFTWARE
Please read the **Installation guide** first (PDF document)

Software components :-

- The Engenuity 2022 Participants Module (Ver 1) (**software components in ZIP file**)
- The Engenuity 2022 Tutorial (**Powerpoint slideshow in ZIP file**)
- The Engenuity 2022 trial data ("trial2022_t1p5.dat" in ZIP file) (**ZIP file**)

GETTING STARTED
Once the software has been successfully installed, please use the 'Guide to Getting Started' to get up and running **PDF SLIDESHOW**



The Participants Module is no use without data, and all company data is held in a company database.

For the purposes of learning how to play Enginuity, key to starting an Enginuity Competition well, there is the opportunity to practice by using a trial company database.

The trial company database to be used for trialling depends upon the type of competition :-

- **For the annual competition for construction professionals**, Enginuity 2022, the trial company database “trial2022_t1p5.dat” should be downloaded, and saved to an appropriate folder, such as the “enginuity2022\data\trial1” folder created earlier.

The trial database is contained in a “zip” file, and needs to be unzipped before use.

- **For all other competitions** the trial data to be used will be the live data for the competition, and will be sent to all team contacts by the competition controller when the team registers for a competition.

BECAUSE OF WINDOWS SECURITY FEATURES, DO NOT PUT YOUR DATA IN THE PROGRAMS OR SYSTEM FOLDERS ON YOUR COMPUTER. You should use the “enginuity2022\data” folder created earlier, or something similar.

The software should be installed on your work machines (PCs or laptops) as required, work-based or personal, and windows operating system (windows 7 and above).

If you are waiting for the software to be installed on your personal machine, please call the Enginuity software on your work machine, then please install it on your personal machine a few minutes.

INSTALLING THE ENGINUITY 2022 SOFTWARE

Please read the **Installation guide** first (PDF document)

Software components :-

- The Enginuity 2022 Participants Module (Ver 1) (software components in ZIP file)
- The Enginuity 2022 Tutorial (Powerpoint slideshow in ZIP file)
- The Enginuity 2022 trial data ("trial2022_t1p5.dat" in ZIP file) (ZIP file)

GETTING STARTED

Once the software has been successfully installed, please use the 'Guide to Getting Started' to get up and running **PDF SLIDESHOW**